



# About Us

Treasure House will be home to 26 young adults with intellectual and developmental disabilities (IDD) and four Community Assistants as they share life together. Each individual will have his/her own one-bedroom apartment and will enjoy access to a family-style kitchen, family room, game room, and patio.

Each resident with IDD will participate in his/her own selected employment, education, or volunteer opportunities. The evenings and weekends will be filled with opportunities provided by Treasure House for the community to gather together for recreation, learning, and volunteering.

## Mission

To provide a supportive living environment where young adults with intellectual and developmental disabilities can participate in their community, achieve independence, and realize their purpose.

## Vision

All adults, regardless of their abilities, will be active and valued members in their community.





# Our Story

Treasure House is the vision of Kurt and Brenda Warner, who believe that all people, regardless of ability, have a purpose and call for their lives and are able to participate in meaningful and challenging activities, establish personal relationships, and contribute to society when provided with appropriate support and opportunities.

The Warners have been inspired and amazed by all that their son Zachary has accomplished in his life, despite the diagnoses and labels given to him. It is their love for Zack that gives them the passion to create an environment that will not only support those with intellectual and developmental disabilities, but will also allow them to thrive as they share their gifts with others.



Treasure House is a supportive living community for young adults with intellectual and developmental disabilities (IDD), with its first location in the Greater Phoenix Metropolitan area. A strong emphasis on independence, respect, and community integration will provide an optimal environment for residents to live, work, and enjoy recreational activities while being part of a larger family.



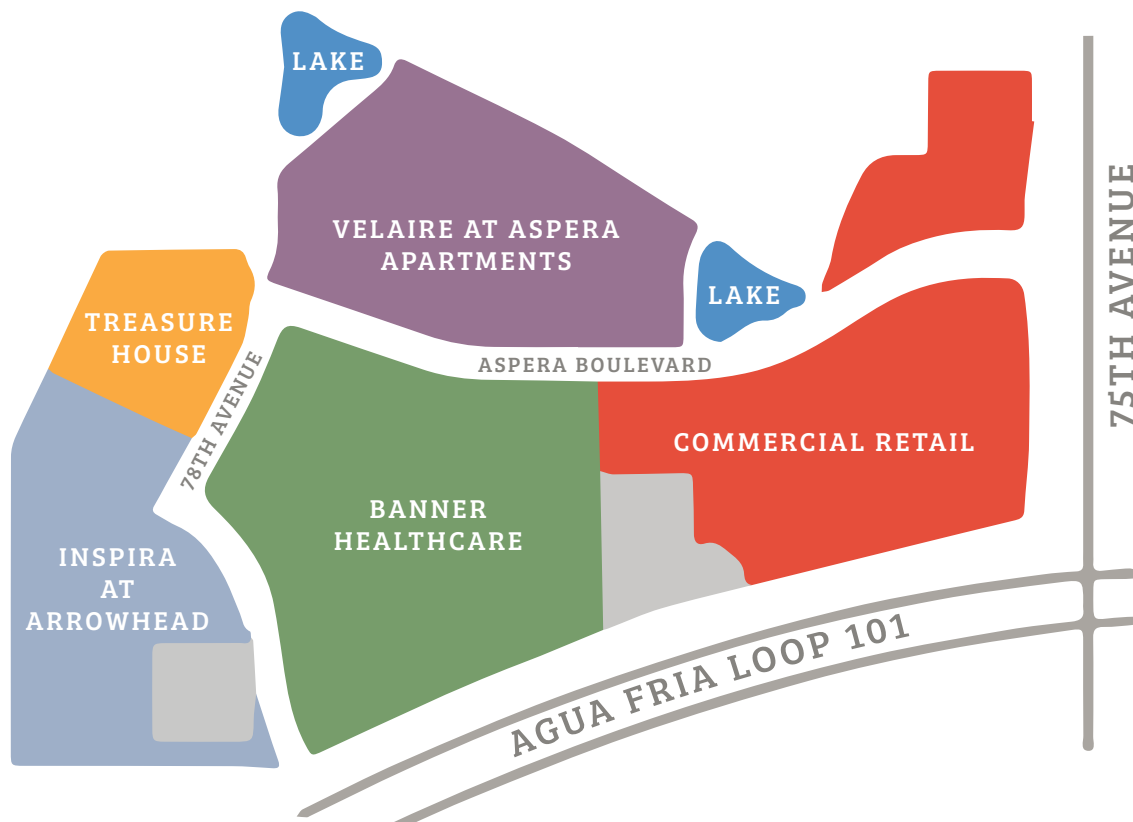


# Community

Treasure House is located within the Aspera at Joy community, conveniently located off the Loop 101 and 75th Avenue in the Northwest Valley. Within Aspera at Joy, residents can connect to work, social, recreational, and spiritual opportunities, all within walking distance.

With plans to open in early 2019, the senior living community of Inspira at Arrowhead will be located adjacent to Treasure House. Treasure House is excited at the opportunity for our residents to share enriching experiences with those at Inspira. As each community will have its own unique amenities, the shared usage of these spaces will allow for great collaborative events and activities.

In addition to the Aspera at Joy community, Treasure House is within five minutes of the Arrowhead Towne Center, providing easy access to retail, restaurants, and recreation.





# Mission Principles

## FOCUS ON CULTIVATING INDEPENDENCE

We will provide opportunities for people with intellectual and developmental disabilities to cultivate independence and live life to the fullest. We will support those with IDD in recognizing and pursuing their goals.

## EMPHASIZE AFFORDABLE SOLUTIONS

We will raise awareness about the need for housing that is financially reasonable for those with IDD and their families. We will responsibly steward resources entrusted to us in order to achieve our goals without sacrificing quality.

## SUPPORT COMMUNITY INTEGRATION AS EQUALS

Each of us has been given unique gifts. We will view our work as successful when we have sparked a lasting change in the community where all gifts are valued and each individual is significant.

## ADVOCATE FOR THE IDD COMMUNITY

We desire to empower those in the IDD community to break down barriers, propose equitable solutions, and advocate for opportunities.

# Philosophies

When we feel we have a purpose in life as human beings, we thrive. Treasure House is dedicated to creating a family - a team of support - for individuals with intellectual and developmental disabilities (IDD). Disabilities are part of the variety of human diversity, and every disability is accompanied by a variety of abilities.

## TREASURE HOUSE IS STRUCTURED AROUND THE FOLLOWING CORE VALUES:

- Community inclusion and engagement
- Maximum independence
- Sustainability, affordability, and replicability



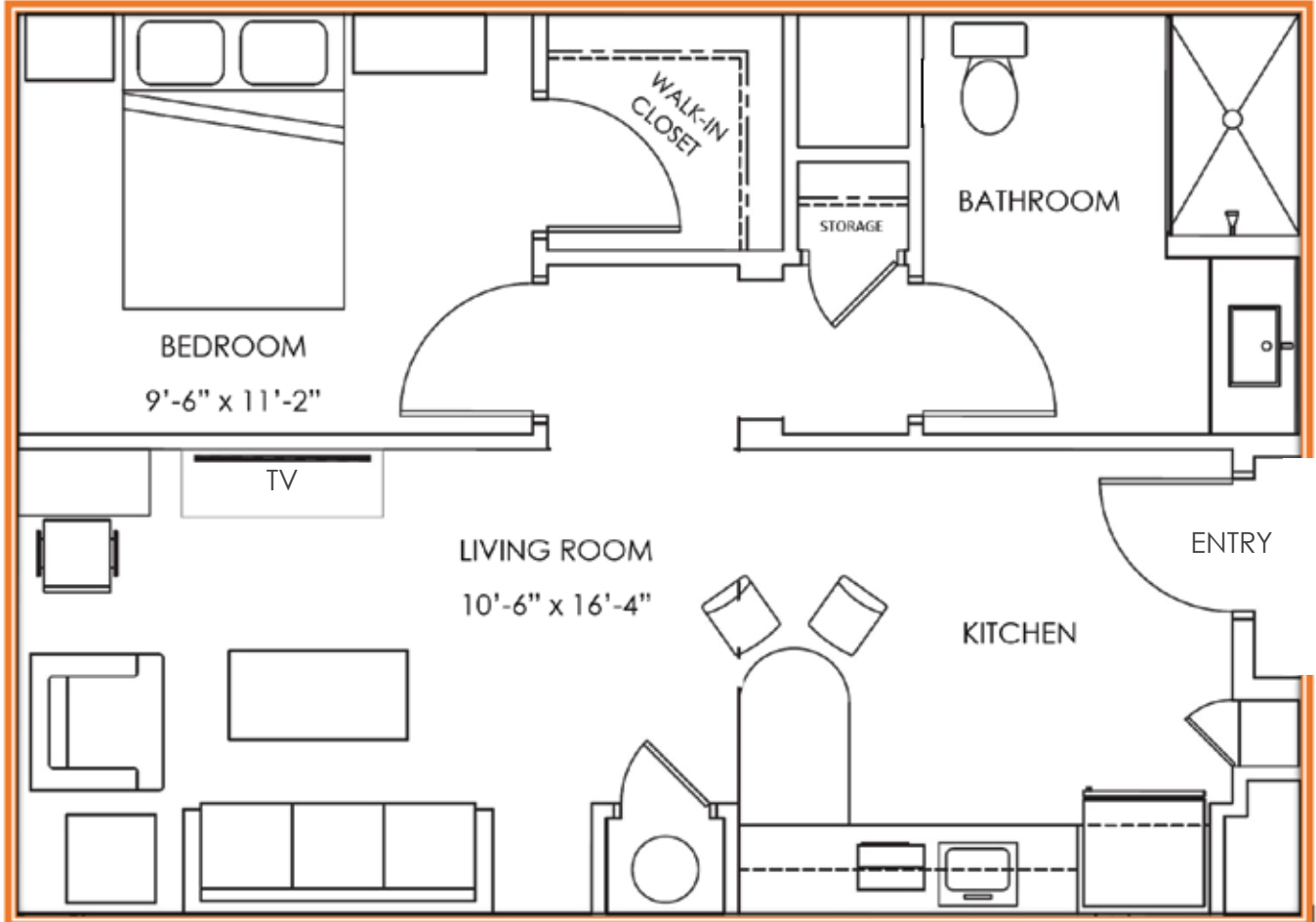
# Site Plan

Treasure House is a brand new, state-of-the-art community. With 36,000 square feet, the two story building includes:

- 30 Residential Units (26 occupied by residents with IDD, 4 by Community Assistants)
- Social Gathering Nodes
- Community Dining Room
- Commercial Teaching/Training Kitchen
- Community Living Room
- Indoor Recreation Room
- Multipurpose Room
- Large Outdoor Covered Patio
- Four Laundry Rooms, each with two washers and two dryers
- Staff Offices
- Security Cameras in common areas
- Fireplace
- Consultation Room
- Restrooms
- Splashpad
- Sports Court
- Outdoor Amphitheater
- Multipurpose Sports Turf

- 1 APARTMENTS 1ST & 2ND FLOORS
- 2 KITCHEN & DINING ROOM 1ST FLOOR  
MULTI-PURPOSE ROOM 2ND FLOOR
- 3 LIVING ROOM
- 4 PATIO AND FIREPLACE
- 5 RECREATION ROOM
- 6 SPLASH PAD AND LAWN
- 7 BASKETBALL COURT
- 8 AMPHITHEATER





# Units

EACH SINGLE-OCCUPANCY APARTMENT INCLUDES:

- 618 square feet, fully furnished
- Private bathroom with shower
- Computer desk and internet access
- Individually controlled thermostats
- Large windows in living room and bedroom
- Keyless access to provide added security
- Kitchenette with refrigerator, built-in microwave, and countertop space
- Walk-in closet
- Living room
- Cable TV-ready
- Coat closet/storage
- Sprinklers and smoke detectors
- Individual water heater





# Program

Treasure House residents are young adults with intellectual or developmental disabilities who are building productive, meaningful, and fulfilling lives in a unique residential setting. Programming reflects Treasure House's dedication to fostering independence, a sense of community, and personal fulfillment.

## **SOCIAL INTERACTION**

Treasure House residents form friendships based on mutual interests and goals while accepting and appreciating the differences in others. As residents live life together, they develop conflict resolution skills such as mediation, active listening, and compromise. Residents are considered equal partners and are given due credit for their contributions with the understanding that community recognition of personal achievement enhances self-confidence. All activities are designed to develop skills, challenge individuals, and increase personal confidence in the community. Treasure House residents live in an environment in which differences are celebrated, and community is encouraged. Residents are considered equals and form friendships based on mutual respect.

## **WELL-BEING**

Programming reflects Treasure House's interest in promoting residents' health through well-balanced, nutritious meal planning and preparation; access to exercise and incentivized fitness programming; and guidance to safeguard or improve existing health.

## **LIFE SKILLS**

Staff assists the residents as they develop new skills and reach their highest level of independence, actively participating in financial planning and management, grocery shopping, home care, meal preparation, and personal hygiene.



## HEALTH

Treasure House staff assists residents in scheduling and attending annual physical and dental exams and communicating with medical professionals. Staff offers support to residents with ordering medications. Nearby emergency medical services at Arrowhead Hospital are less than ten minutes from Treasure House. All costs associated with medical, psychological, and therapeutic needs are the sole responsibility of the residents or their legal guardians.

Treasure House is not licensed to and therefore cannot provide medical or skilled nursing care or be responsible for medical care decisions. Due to recent federal legislation, Treasure House cannot share medically-related information about residents with any person or institution without written permission from the residents or their legal guardians.

## ACTIVITIES

Activities, outings, and social events provide opportunities to build bonds of friendship through shared experiences. Residents will enjoy monthly large trips to nearby recreational and cultural venues (Wildlife World Zoo, sporting events, etc) and weekly planned onsite activities organized by residents and Staff (BBQs, Movies on the lawn, game night, etc.).





## RECREATION



Treasure House residents will have access to an indoor recreation room with pool table, foosball table, and other gaming equipment. Outside, residents will enjoy a splash pad, amphitheater, sports court, and multipurpose sports turf. An indoor multipurpose room for fitness or group training activities, access to bicycles, nearby indoor swimming pool, and complete fitness center, as well as great walking and biking paths in the Aspera at Joy Community, will encourage a healthy lifestyle.

## MEALS

Continental breakfast and family style dinner is provided seven days a week in the dining room. Residents prepare or arrange their own lunches. Each unit is equipped with a microwave and refrigerator; however, all residents will have access to the kitchen for lunch meal preparation, if desired. Monthly calendars will be posted to provide advanced planning and support for alternative meal planning for specialized dietary needs. Dinners will be prepared by residents with Community Assistant support to ensure focus on nutritionally balanced meals. Every occasion in the kitchen is another opportunity for acquiring new skills and expanding food experiences.

## EMPLOYMENT & VOLUNTEERING

Treasure House residents are supported to seek employment, education, and volunteer opportunities to fit their individual abilities and preferences. Staff oversees efforts to match residents with companies in the community that will build meaningful relationships that encourage and support continued growth and expanded possibilities.



# A Day at Treasure House

Monthly activity calendars will be shared with residents and their families the third Friday of the previous month. Below is a sample weekly calendar to help paint the picture of a day in the life of a Treasure House resident.

## Weekly Life at Treasure House

	SUNDAY	MONDAY	TUESDAY	WEDNESDAY	THURSDAY	FRIDAY	SATURDAY
7:00AM		Wake-up and morning hygiene	Wake-up and morning hygiene	Wake-up and morning hygiene	Wake-up and morning hygiene	Wake-up and morning hygiene	
7:30AM		Breakfast	Breakfast	Breakfast	Breakfast	Breakfast	
8:00 AM		Employment, volunteer or day program	Employment, volunteer or day program	Employment, volunteer or day program	Employment, volunteer or day program	Employment, volunteer or day program	
8:30 AM							
9:00 AM	Wake-up and morning hygiene						
9:30 AM	Breakfast						
10:00 AM	Worship Opportunities						Breakfast
10:30 AM							
11:00 AM							Fitness Fun
11:30 AM							
12:00 PM	Residents are on their own for lunch in their rooms or in the community. Access to the kitchen is available.						
12:30 PM		Employment, volunteer or day program	Employment, volunteer or day program	Employment, volunteer or day program	Employment, volunteer or day program	Employment, volunteer or day program	Volunteer Opportunity
1:00 PM							
1:30 PM							
2:00 PM	Cleaning/laundry						
2:30 PM							
3:00 PM							
3:30 PM	Fitness Fun						
4:00 PM		Nutrition Classes	Grocery Shopping	Life Skills Assistance	Fitness Fun	Cleaning/laundry	
4:30 PM							
5:00 PM							
5:30 PM	Family Night: BBQ and Games on the Lawn						
6:00 PM		Dinner	Dinner	Dinner	Dinner	Dinner	Dinner
6:30 PM							
7:00 PM							
7:30 PM	House Meeting		Arts & Crafts		Visiting Artist		
8:00 PM		Community Game Night		Movie Night		Group Outing	Social Activity
8:30 PM							
9:00 PM			Cleaning/laundry		Cleaning/laundry		
9:30 PM							
10:00 PM							

This is a sample overview of a typical weekly schedule. Individual support will be provided based upon each resident's personal schedule and needs. All activities are optional, however, residents will be expected to participate in the provided programming to a certain degree. Treasure House is excited to partner with several local non-profits to provide a variety of enriching on-site classes and activities as well as community outreach activities.



# Admissions

Treasure House will serve individuals with intellectual and developmental disabilities (IDD) that are no longer receiving federally mandated educational services. Potential Treasure House residents are young adults with IDD who seek to build productive, meaningful, and fulfilling lives in a unique residential setting.

## **EACH TREASURE HOUSE RESIDENT:**

- Is 19-35 years old and a high school graduate at the time of inquiry and intake
- Has a diagnosed intellectual or developmental disability
- Is able to complete his/her daily needs (bathing, dressing, feeding), access his/her physical environment, and live independently with minimal assistance
- Communicates needs effectively
- Works, volunteers, or is enrolled in a community college, trade school, or a day training program
- Is accustomed to contributing to “family style” chores and activities such as cooking and cleaning
- Enjoys interacting socially and respects social boundaries of others
- Is comfortable with a dynamic schedule, including attending center- and community-based events
- Has an alternate residence for holidays or sudden and long-term illness
- Is able to show proof of income

## **TREASURE HOUSE IS NOT APPROPRIATE FOR ALL INDIVIDUALS**

Treasure House is not appropriate for individuals who have a psychiatric and/or serious emotional disturbance that impacts behavior, have serious medical conditions that require daily or weekly monitoring or intervention, and/or require 24-hour supervision.

Treasure House is a community-based, structured program with 24/7 on-site support. Individual safety and dignity will be our priority, but residents will be working and living in the community and allowed to make decisions that affect all aspects of their lives, all of which create a level of risk inherent to this philosophy and approach.



# Fee Structure

**CURRENT FEES SET BY TREASURE HOUSE PHOENIX ARE AS FOLLOWS:**

## **MONTHLY ROOM AND BOARD**

**\$3,200**

### **THIS FEE INCLUDES:**

- **Single Bedroom Apartment (618 square feet)**
- **Utilities (electric, gas, water, cable, and high-speed Internet)**
- **14 Meals a week**
- **Transportation Services to employment, day program, and other activities within ten miles**
- **Employment Readiness Support and Coaching**
- **Full access to Treasure House shared spaces such as the Indoor Recreation Room, Splash Pad, Sports Court, Outdoor Patio, and Multipurpose Room**
- **Staff support 24/7**
- **Group Outings**
- **Trips to nearby cultural venues**
- **Treasure House sponsored events**

**APPLICATION FEE: \$150**





# Our Team

Treasure House is led by a team of people with a strong desire to love fully, serve well, and share in community together. The Executive Board makes governing decisions for the organization with expert advice and insight from the Advisory Board. Onsite staff overseeing the day-to-day schedules and operations includes an Executive Director, Program Manager, and Director of Operations. Based on resident capacity, as many as six Community Assistants share in all aspects of life at Treasure House, each living in a studio apartment on property. Trained volunteers join residents and Community Assistants in evening and weekend activities and meals.

## Board of Directors

**Brenda Warner**  
PRESIDENT & CO-FOUNDER

**Kurt Warner**  
CO-FOUNDER

**Jeff Thompson**  
TREASURER

**Don Cardon**

**Mark Dalton**

**Lauri Tanner**

**Keaton Merrell**

**Daniel Fox**

**Mark Stebbings**

**Gary Todd**

**Rock Rickert**



**PLEASE NOTE THAT BOARD MEMBERS ARE NOT INVOLVED IN THE ADMISSIONS PROCESS,  
AND WILL DIRECT ANY AND ALL INQUIRIES TO THE DIRECTOR OF OPERATIONS  
AT [ADMISSIONS@TREASUREHOUSE.ORG](mailto:ADMISSIONS@TREASUREHOUSE.ORG).**